

PROTECTIVE
VINYL
WALLCOVERING

PROTECTWALL

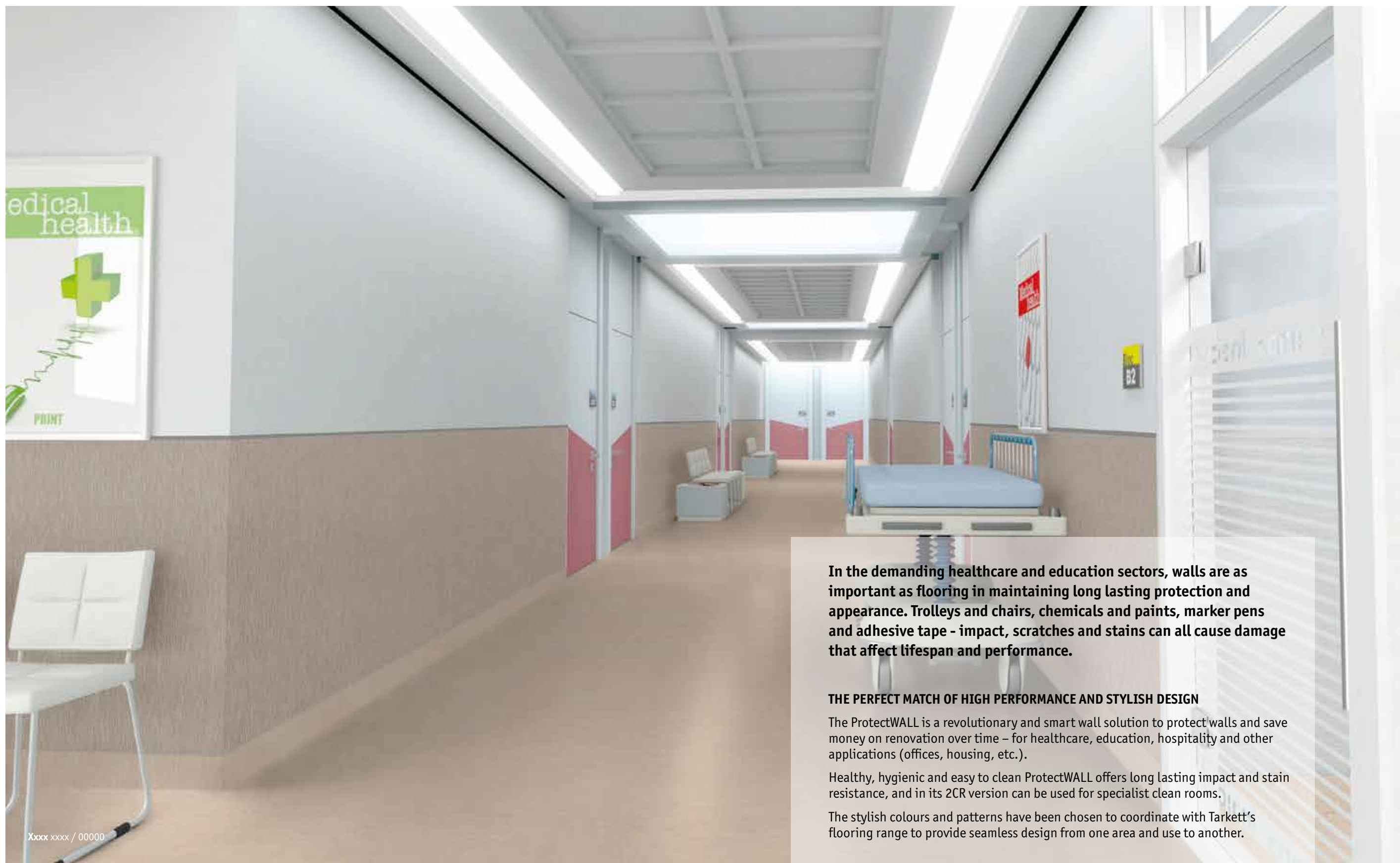
DESIGNED FOR IMPACT! ProtectWALL is the ideal solution for areas that require everyday high level protection such as corridors and patient rooms in Healthcare and classrooms and common areas in Education environments.



SUMMARY

A unique and innovative wall covering solution	4
Designed for impact	6
A range that meets major requirements	8
A safe and hygienic solution	9
Installation possibilities	10
Stylish and coordinated with Tarkett floor coverings	11
Colours selected for serenity or vivid atmosphere	12
Accessories for a perfect finish	14
Installation instructions & tools required	16
Technical specifications	19

└ A unique and innovative wall covering solution



In the demanding healthcare and education sectors, walls are as important as flooring in maintaining long lasting protection and appearance. Trolleys and chairs, chemicals and paints, marker pens and adhesive tape - impact, scratches and stains can all cause damage that affect lifespan and performance.

THE PERFECT MATCH OF HIGH PERFORMANCE AND STYLISH DESIGN

The ProtectWALL is a revolutionary and smart wall solution to protect walls and save money on renovation over time – for healthcare, education, hospitality and other applications (offices, housing, etc.).

Healthy, hygienic and easy to clean ProtectWALL offers long lasting impact and stain resistance, and in its 2CR version can be used for specialist clean rooms.

The stylish colours and patterns have been chosen to coordinate with Tarkett's flooring range to provide seamless design from one area and use to another.

Designed for impact



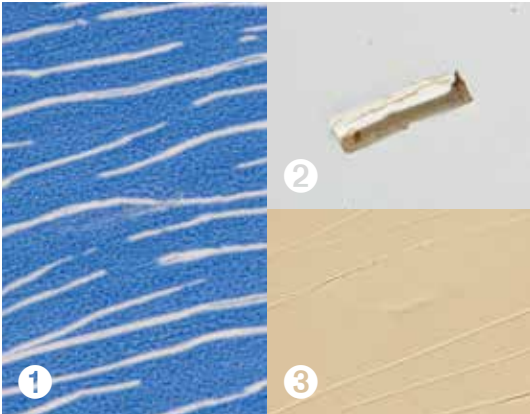
PROTECTWALL EXTENDS THE BENEFITS OF TARKETT'S EXPERTISE IN EXTREME PROTECTION, FROM FLOORS TO WALLS.

A COST EFFECTIVE SOLUTION

- **Protects your walls** against impacts, scratches and stains (including permanent marker) for a minimum of 10 years without renovation
- Looks new and clean longer thanks to PUR surface treatment and easy cleaning protocol

PROVEN RESISTANCE

ProtectWALL offers outstanding performance in comparison to other wall coverings.



Against **impacts**
(eg. From trolleys, medical beds, heavy equipment, chairs)



Against **scratches**
(eg. voluntary damages)

1 ProtectWALL 2 Plasterboard 3 Stiff plates

A PERFORMANCE GUARANTEE FROM INTERNATIONAL RESEARCH LABORATORIES

Tests by international research laboratories confirm ProtectWALL's outstanding performance for impact and stain resistance, easy cleaning and maintenance.

IMPACT RESISTANCE Tested according to EN 259 - 2 and ASTM 4226 for impact resistance	Result Impact resistant, no visible splits nor cracks, nor bursts
SCRATCH RESISTANCE Sclerometer tested for scratch resistance	Result No visible scratches or scrapes
SURFACE RESISTANCE Spongeability / Washability / Brushability tests according to EN 12956	Result No change in appearance
SEAM STRENGTH Resistance to traction test according to EN 684	Result Resistance superior to 400 N/50 mm
FLEXIBILITY Mandrel test according to EN 435/ISO 24344	Result No break
STAIN RESISTANCE Tested according to EN 423 / ISO 26987 for stain resistance Effect on the wall covering when the staining agent was cleaned-off after 2 hours	Result Level 0, not affected
RESISTANCE TO SHOE MARKS Scuff "heel" test	Result No visible marks after cleaning with water

STAINING AGENTS TEST

RESULT: NO VISIBLE TRACES ON PROTECTWALL AFTER CLEANING WITH WATER AND A NEUTRAL DETERGENT.

HEALTHCARE	EDUCATION
✓ ACETIC ACID 50%	✓ PERMANENT MARKER
✓ BETADINE	✓ BALL POINT PEN
✓ CETAVLON	✓ BLEACH
✓ CHLOROFORM	✓ GOUACHE POSTER PAINT
✓ CONCENTRATED ACID FOR HAEMODIALYSIS	✓ PHOTOCOPIER INK
✓ ETHER	✓ LEAD PENCIL
✓ ETHYL ACETATE	✓ NAIL VARNISH
✓ FORMIC ACID CONCENTRATE	✓ RUST
✓ FORMOL	✓ BUTTER
✓ HYDROCHLOTIC ACID CONCENTRATE	✓ SODA
✓ HYDROCHLORIC ACID 50%	✓ TOMATO SAUCE
✓ MERCRYL	✓ SHOE POLISH
✓ NITRIC ACID 50%	✓ INK
✓ NITRIC ACID CONCENTRATED	
✓ PEROXIDE	

Tests were carried out according to EN 423/ISO 26987 using the staining agents most commonly found in health and education environments.



A range that meets major requirements



PROTECTWALL 1.5

PROTECTWALL 2

PROTECTWALL 2 CR

The ideal solution for areas that need everyday protection levels such as patient rooms in healthcare and general use in education. ProtectWALL 1.5 offers excellent impact resistance and is easy to clean and maintain while reaching B-s2,d0 fire performance.

The ideal solution for areas that require a high level of impact resistance, such as corridors in healthcare, ProtectWALL 2 offers heavy duty impact resistance and is easy to clean and maintain.

The ideal solution for laboratories and clean rooms in healthcare, reduces the level of environmental pollutants, guarantees a controlled level of contamination and is easy to clean and maintain.

ProtectWALL 2CR meets the requirements of EN 14644-1 standards for Clean Rooms design. In particular, these standards set specific limits for airborne particulate contamination, including particle size and concentration.

THE ONE SOLUTION FOR EVERY REQUIREMENT

Two thickness levels (1.5mm and 2mm) and a special contamination control version (2 mm Clean Room) ensure a complete solution.

PRODUCT	APPLICATION	PERFORMANCES					
		REACTION TO FIRE	MECHANICAL RESISTANCE	STAIN RESISTANCE	CHEMICAL RESISTANCE	SPONGEABILITY WASHABILITY LYABILITY BRUSHABILITY	CONTAMINATION CONTROL
		EN13501-1	EN 259 part 1	ISO 26987	ISO 26987	EN 12956	EN 14644-1
ProtectWALL 1.5 1.5 mm total thickness	Classrooms, corridors patient rooms, wards, circulations	B-s2, d0	■ ■ ■	■ ■ ■	■ ■ ■	■ ■ ■	■
ProtectWALL 2 2 mm total thickness	Corridors, traffic areas	B-s3, d0	■ ■ ■	■ ■ ■	■ ■ ■	■ ■ ■	■
ProtectWALL 2 CR (clean rooms) 2 mm total thickness	Clean rooms: operating theatre, laboratories	B-s3, d0	■ ■ ■	■ ■ ■	■ ■ ■	■ ■ ■	■ ■ ■

A safe and hygienic solution



HYGIENIC AND CLEAN

PRACTICAL FROM HIGH TO LOW REQUIREMENT ENVIRONMENTS

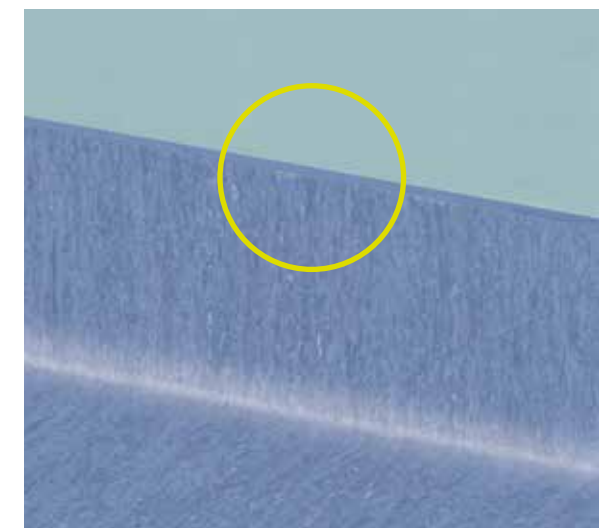
- Clean environment from floor to wall thanks to continuous **installation**
- Flexible PVC wall covering allowing to **cove inside and outside corners**
- Class 1 Certification for CleanRoom applications (ProtectWALL 2CR)
- With very low voc emissions, ProtectWALL offers a unique level of indoor air quality ideal for sensitive healthcare and education environments.



COMPLETE ACCESSORIES OFFER ENSURING A PERFECT FINISH

Hot welding junctions offering resistance & hygiene.

All ProtectWALL products can be hot welded to floorings.



Installation possibilities

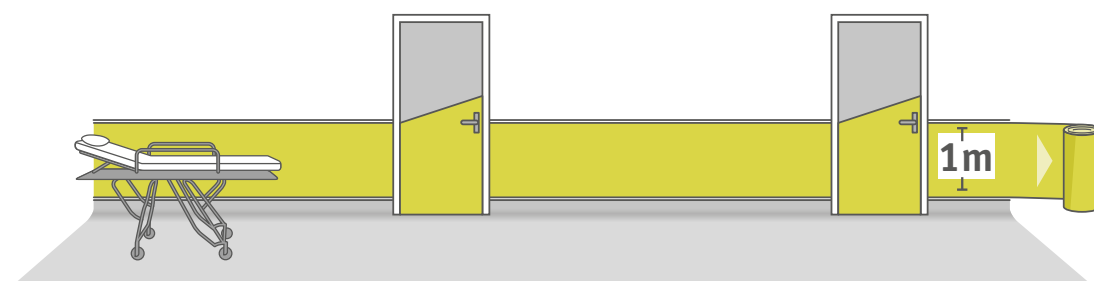


A WIDE RANGE OF POSSIBILITIES

Less downtime and renovation duration, ready for immediate use after installation.

Multiple installation possibilities depending on design and protection requirements:

Horizontal



Vertical



Stylish and coordinated with Tarkett floor coverings



41 EXCLUSIVE COLOURS & PATTERNS DESIGNED INTO A FULL CONCEPT

FOR AREAS INCLUDING

- Healthcare
- Education
- Hospitality
- Other applications (offices, housing etc.).

DESIGNED TO COORDINATE WITH TARKETT'S FLOORING RANGES

ProtectWALL is colour coordinated with tarkett's vinyl floor coverings to provide stylish all-in-one design solutions for healthcare and education.

Multiple coordination options

- iQ ranges
- Acczent ranges
- Tapiflex ranges



ProtectWall 2 26501 006 & Acczent Excellence 80 - 25026020



iQ Granit 3040379 & ProtectWall 1.5 - 26500

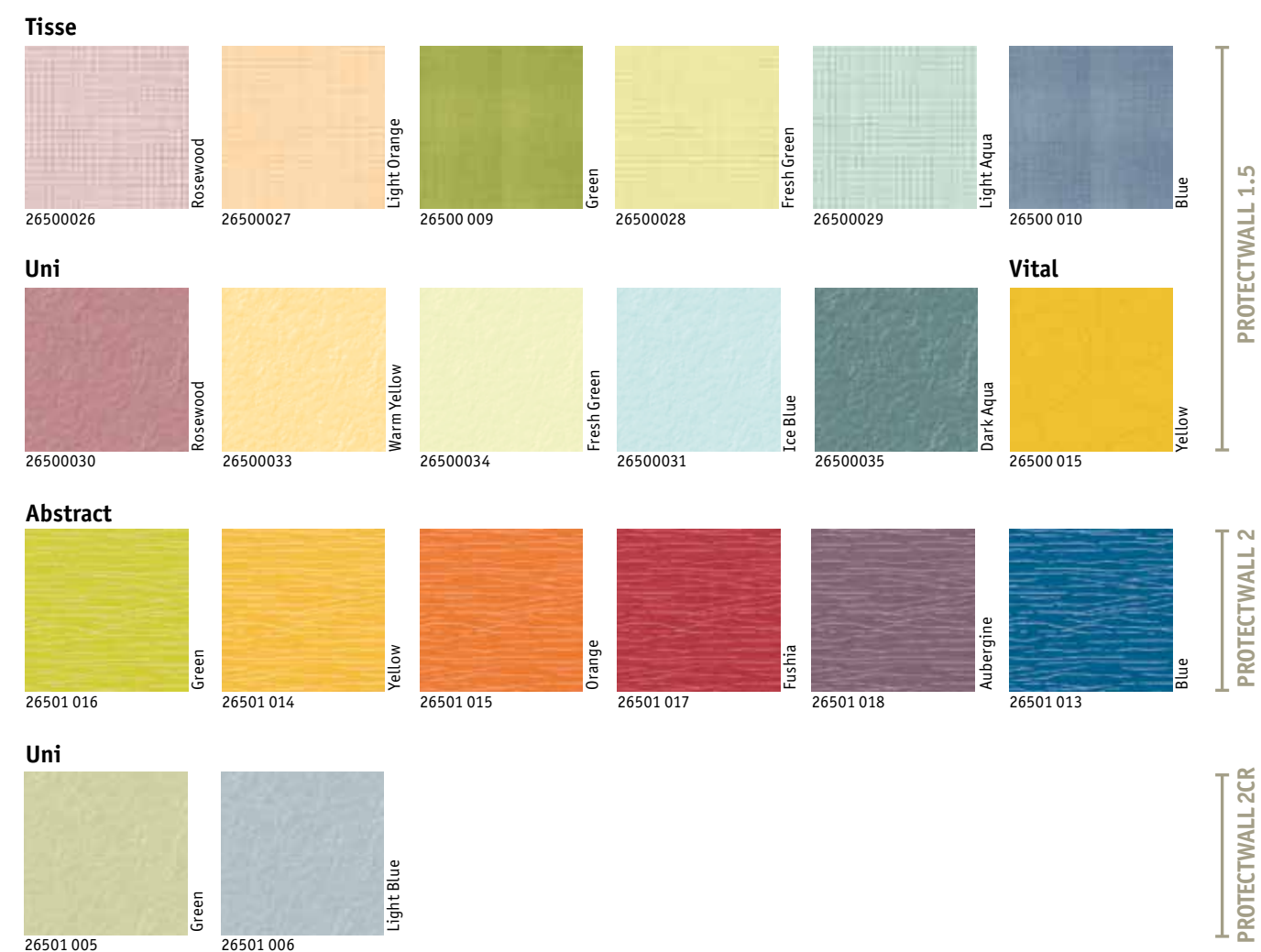
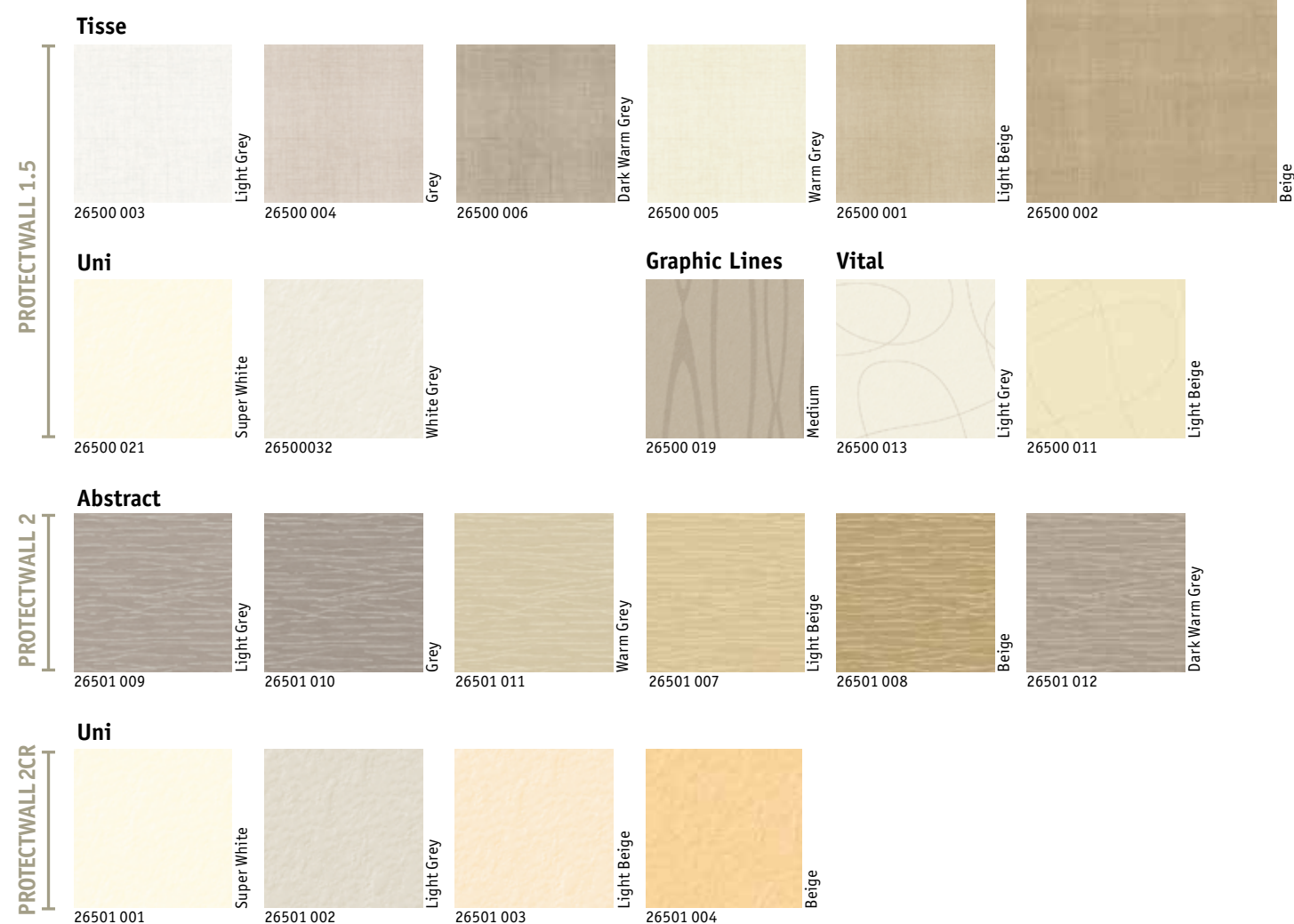


ProtectWall 1.5 26500009 & Tapiflex Evolution - 3626036



ProtectWALL 1.5 26500015 & Tapiflex Excellence 65 - 25013101

Colours selected for serenity or a vivid atmosphere

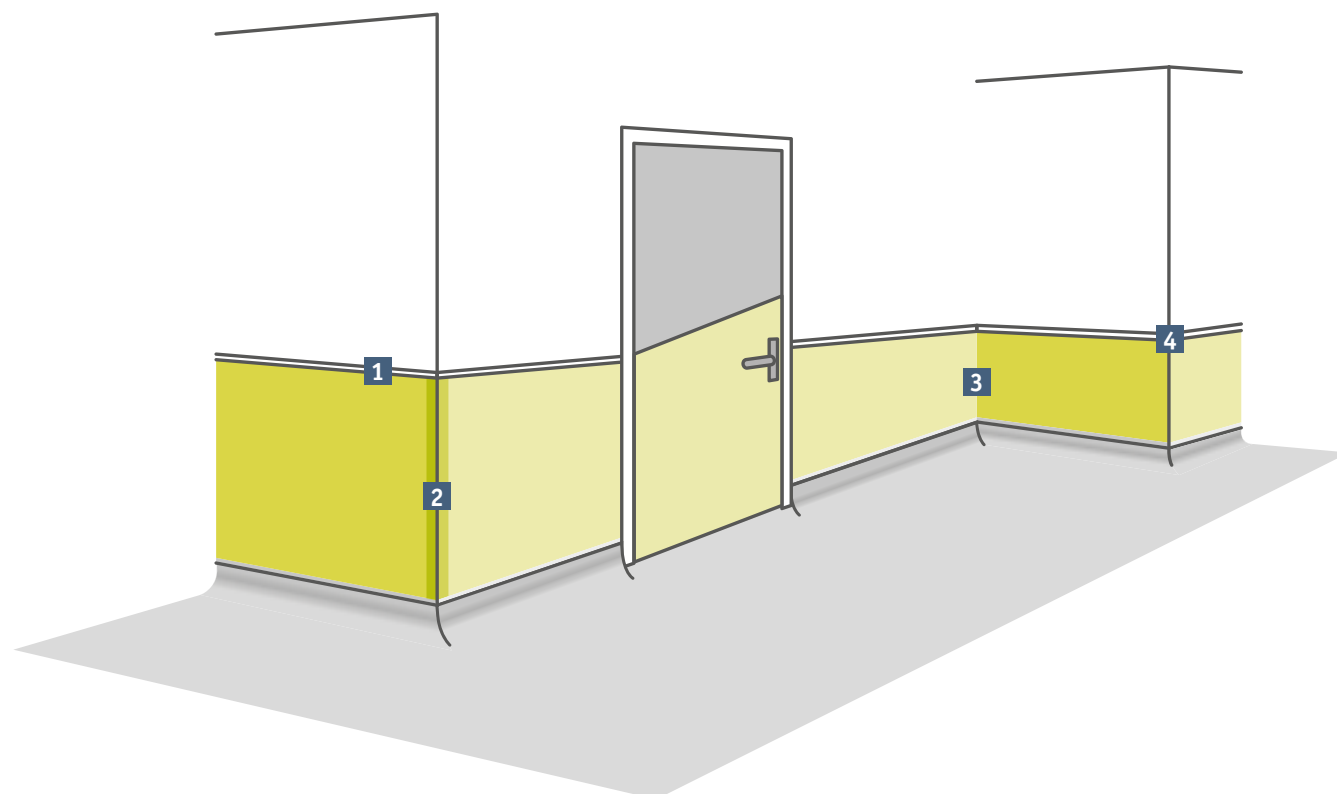


Accessories for a perfect finish



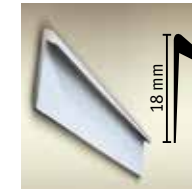
- Caps
- Set-in corners
- Set-on corners

- Cove formers
- Welding rods



1 CAP

Provides a perfect finish and protects the edge of the wall covering.

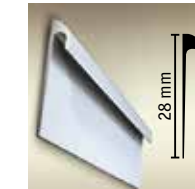


ALUMINIUM CAP

Self-adhesive
3,5 mm (ext.) x 2,5 mm (int.) x 18 mm x 2500 mm long

2662 1001 Silver
2662 1002 Stainless steel

Delivery:
one box of 10 pcs = 25 lm

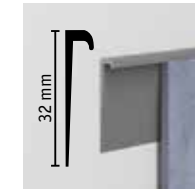


ALUMINIUM CAP

Self-adhesive
5,2 mm (ext.) x 3 mm (int.) x 28 mm x 2500 mm long

2662 6001 Silver
2662 6002 Stainless steel

Delivery:
one box of 10 pcs = 25 lm

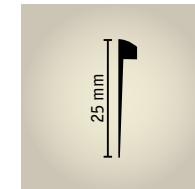


SOLID PVC CAP

32 mm high x 4,5 mm (ext.) x 2,5 mm x 2500 mm long (int.)

26619001 white
26619002 beige
26619003 brown
26619004 light grey
26619005 silver

Delivery: 20 pieces of 2,50 lm per box = 50 ml



FLEXIBLE PVC CAP

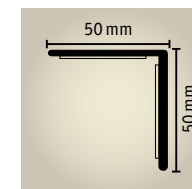
6 mm (ext.) x 2,5 mm (int.) x 25 mm x 25 m

26620001 Caramel
26620002 Dark grey
26620003 Light grey
26620004 White
26620005 Aluminium

Delivery:
1 roll of 25 m per carton

2 SET-ON CORNER

Covers and protects the outside corner.

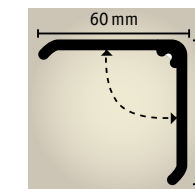


SOLID PVC 90°

set-on corner

Self-adhesive
50 mm x 50 mm x 900 mm
2662 5001 White
2662 5002 Grey
2662 5003 Medium grey
2662 5004 Light beige
2662 5005 Medium beige
2662 5006 Yellow

Delivery:
20 pcs in each pack = 18 lm



SOLID PVC

ADJUSTABLE

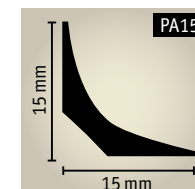
set-on corner

Self-adhesive
60° to 130°
60 mm x 60 mm x 900 mm
2662 7001 White
2662 7002 Grey

Delivery:
20 pcs in each pack = 18 lm

3 COVE FORMER

Improves hygiene inside wall corner and makes maintenance easier.

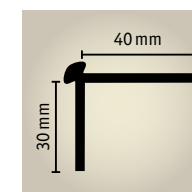


2661 7001

Delivery:
25 pcs of 2lm = 50 lm

4 SET-IN CORNER

Protects the outside corner when angle is not covered.



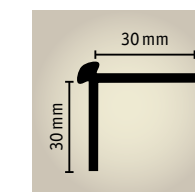
ALUMINIUM

set-in corner

30 mm x 40 mm x 4,5 mm (ext.) x 2,5 mm (int.) x 2500 mm long

2662 4001 Silver
2662 4002 Stainless steel

Delivery:
one box of 10 pcs = 25 lm



FLEXIBLE PVC

set-in corner

30 mm x 30 mm x 4,5 mm (ext.) x 2 mm (int.) x 2500 mm long

2662 3001 Caramel
2662 3002 Dark grey
2662 3003 Light grey
2662 3004 White
2662 3005 Aluminium

Delivery: 1 roll of 25lm



SOLID PVC

set-in corner

22,2 mm x 20 mm x 2,2 mm (int.) x 2600 mm long

2662 2001 White

Delivery:
on box of 10 pcs = 52 lm

Installation instructions



RECOMMENDATIONS

- Carefully follow all specifications and instructions.
- Contact your Tarkett representative if you are unsure about any part of the installation.
- Make sure that you have the latest details - improvements lead to frequent changes to product information.
- Use the same batch number for each continuous surface.

- Store the rolls upright.
- Cut the sheets to the required size before installation.
- The cut sheets should be kept at a minimum ambient temperature of 15°C for at least 24h before installation.
- The substrate (wall) must be flat, level, clean, sound, dry, solid, hard, smooth and free from marks (felt pen, marker, etc.).

- Absorbency levels should be checked and moderate.
- There should be no exposure to moisture
- Use adhesives recommended by Tarkett and always follow the manufacturer's instructions.
- After completion inspect the work to ensure that the new wall covering is free from adhesive residues.

STEP BY STEP INSTALLATION

1. PREPARING THE WALLS/ SUBSTRATE

- Observe current national standards for the preparation/ dryness of the substrate and installation procedures.
- Check the moisture levels. A solid substrate should have a level below the maximum permitted by national standards.
- Check absorbency levels. They should be moderate and must be adjusted if necessary.
- Check that there is no exposure to moisture.

- The substrate must be level, flat, clean, sound, dry, solid, hard, smooth and free from marks (felt pen, marker of any type, ballpoint pens, paint, etc.) that could migrate and discolour the wall covering.
- While Tarkett may list some manufacturers and types of adhesive, mortar (filler) and surface damp-proof membrane, this does not constitute a product guarantee. The list of products and manufacturers is not guaranteed complete or current.

- Tarkett accepts no liability for the failure of any of these products to perform in conjunction with any of its products. It is the responsibility of the adhesive, mortar (filler) and surface damp-proof membrane manufacturer and flooring contractor to ensure that the selected products are appropriate for the use and applied in accordance with the manufacturers' recommendations.

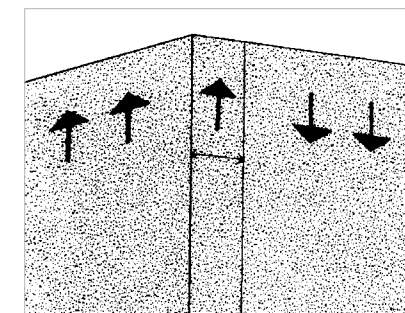
CONDITIONS REQUIRED FOR INSTALLATION

- It is important to store the sheets for at least 24 hours before installation at a minimum ambient temperature of 15°C /see national regulations/. This temperature should be maintained throughout the installation.
- The recommended relative humidity inside the room is 35-65% /see national regulations/.
- The rolls must be stored upright

2. INSTALLING THE WALL COVERING

VERTICAL INSTALLATION

The sheets can be installed vertically and to cover the entire height of the room (sheets reversed or not, according to pattern).



HORIZONTAL INSTALLATION

ProtectWALL can also be installed horizontally.



3. GLUING

- Use an acrylic adhesive emulsion recommended by Tarkett. Use the recommended trowel (TKB A4 or A1 acc. the situation) to apply about 150-250 g/m². Always follow the adhesive manufacturer's instructions and observe the adhesive drying and working times. Position the sheets tightly edge to edge.

- As soon as the wall covering is in position, roll twice with a manual roller to flatten the adhesive ridges. A piece of board with a rounded edge, a cork press or a pressing hammer can also be used.

Please contact your local sales network for more information.

INSIDE CORNER

- Create the corner by using the corner roller and heating the covering with the heat gun. If the corner of the substrate is not straight, make a vertical cut at least 10 cm from the corner and continue hanging.

- You can use a profile to help form the correct angle (PA15, 20, 30 or 40).

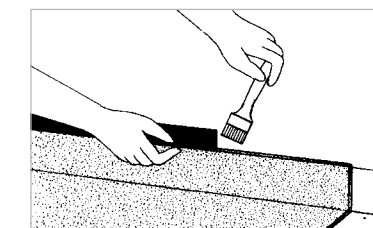
OUTSIDE CORNER

Double-glue the wall covering with a suitable adhesive 5 cm each side of the corner.

- In case of a non-vertical corner, make a vertical cut at least 10 cm from the corner and continue hanging.

4. JUNCTION WITH THE FLOOR COVERING

Coving should be a minimum 10 cm high and is made by hot welding the floor and wall coverings. We recommend the use of Tarkett cove formers. Where there is no coving, we recommend the use of a set on skirting such as KS61.



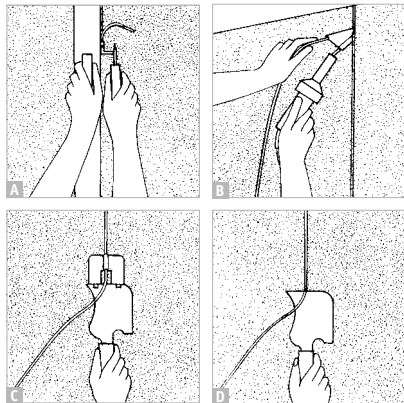
5. HOT WELDING

A The adhesive must bond completely (24 to 48 hours) before welding.

B Groove joints to about 2/3 of the thickness using a hand grooving tool before welding.

C Weld with hot air and a Tarkett Speed Welding Nozzle or equivalent

D Trim the welding rod twice: just after welding and after cooling. Please contact your local sales network for more information.



AFTER INSTALLATION

IMPORTANT!

Wait 48 to 72 hours after installation before carrying out any work on the wall covering.

PROTECTING THE WALL COVERING

If further building work is necessary once the wall has being installed, a protective fi lm should be used to prevent damage. Never stick masking or other adhesive tape directly on to ProtectWALL.

POST INSTALLATION CLEANING

To clean the wall covering after installation:

• Remove residual adhesive with methylated spirits and a clean cloth.

• Sweep or damp mop the area to remove loose dirt and building dust.

MAINTENANCE

DAILY MAINTENANCE

• Clean with a damp cloth or sponge using a neutral detergent (pH 6/8) as recommended by the manufacturer.

PERIODIC MAINTENANCE

• Wet brush (soft bristle brush) with diluted alkaline detergent (pH 8/10). Always follow the detergent manufacturer's instructions.

• Disinfectants, degreasing and/or descaling agents may sometimes be required.

TYPE OF TOOL	JANSER	ROMUS
Hot air gun	226 110 000	95 047
Corner roller	224 400 123	95 135
Wall groover or adjustable groover		95 125
Guide rule	262 601 000	91 580
High speed hot air nozzle -	224 700 300	95 030
High speed nozzle	224 400 300	
Tarkett super high speed welding nozzle (Ref. 1258 012)		
Quarter moon knife	262 621 000	95 140
Adjustable trimmer	262 625 000	95 150
Traditional blowtorch	224 962 000	95 074
("welder")	224 818 000	95 080
or special wall seam plane (studded flooring)	262 626 500	95 172
or trimming tool slim	262 609 100	
or "slim" or "trim" trimmer	262 609 300	
Scriber or	222 430 000	95 430
combined scriber/markig gauge	262 130 000	
cork wedge/squeegee	262 380 000	93 145
stainless steel trowel		93 150
Mozart knife	262 636 000	95 130

TECHNICAL ASSISTANCE

If your business does not yet have experience in installing ProtectWALL contact our TEC (Technical Expertise Centre).
Call +33(0)3 24 29 84 69
for advice and recommendations

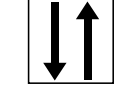
Technical specifications

CERTIFICATION & CLASSIFICATION	STANDARDS	ProtectWALL 1.5	ProtectWALL 2	ProtectWALL 2 CR (Clean Room)
Description	EN 15102 EN 14644-1	Heavy duty wallcovering -	Heavy duty wallcovering -	Heavy duty wallcovering ISO class 1 GMP class A
TECHNICAL CHARACTERISTICS	STANDARDS			
Total thickness	ISO 24346 - EN 428	1.50 mm	2.00 mm	2.00 mm
Total weight	ISO 23997 - EN 430	2.400 g/m²	3.000 g/m²	3.000 g/m²
Transparent wear layer	ISO 24340 - EN 429	0.35 mm	0.55 mm	0.55 mm
Surface Treatment		TopClean XP™	TopClean XP™	TopClean XP™
Form of delivery	ISO 24341 - EN 426 Sheet (rolls)	20 running metres x 200 cm	20 running metres x 200 cm	20 running metres x 200 cm
TECHNICAL PERFORMANCES	STANDARDS			
Dimensional stability	ISO 23999 - EN 434	≤ 1% Lengthwise	≤ 1% Lengthwise	≤ 1% Lengthwise
Reaction to fire	EN 13501-1	B-s2, d0	B-s3, d0	B-s3, d0
Thermal resistance	EN 12524	0.01 m² K/W	0.01 m² K/W	0.01 m² K/W
Electrostatic properties	EN 1815	≤ 2 kV	≤ 2 kV	≤ 2 kV
Curl resultant to heat	ISO 23999 - EN 434	≤ 2 mm	≤ 2 mm	≤ 2 mm
Light fastness	EN ISO 105-B02	≥ 6	≥ 6	≥ 6
Resistance to impacts	EN 259-2/ASTM D 4226	Resistant to impacts No visible burst nor crack	Resistant to impacts No visible burst nor crack	Resistant to impacts No visible burst nor crack
Scratch resistance		Sclerometer test: Excellent No visible scratch	Sclerometer test: Excellent No visible scratch	Sclerometer test: Excellent No visible scratch
Spongeability washability Lyability brushability	EN 12956	Super washable and brushable	Super washable and brushable	Super washable and brushable
Scuff resistance		Excellent No visible mark after cleaning	Excellent No visible mark after cleaning	Excellent No visible mark after cleaning
Determination of Flexibility	ISO 24344 - EN 435	No damage, no crack	No damage, no crack	No damage, no crack
Determination of seam strength	EN 684	> 400 N/50 mm	> 400 N/50 mm	> 400 N/50 mm
Hardness Shore A	ISO 868	92	94	94
Stain resistance Chemical resistance	ISO 26987 - EN 423	Not Aff ected (0)	Not Aff ected (0)	Not Aff ected (0)
Contamination control	EN 14644-1	—	—	ISO Class 1 /GMP class A
Ease of decontamination	ISO 8690	—	—	Good
Colours		Tisse: 10 - Vital: 6 Graphic Lines: 2 - Uni: 1	Abstract: 12	Uni: 6

The above information is subject to modification for the benefit of further improvement (09/16). Tarkett's instructions regarding installation, cleaning and maintenance should be observed. Please contact your local Tarkett sales office for instructions.

CUSTOMS TARIFF : 482050000000F

Logistics Information



Reverse

General Information



1.5	LRV No.	NCS No.	Welding Rod No.	1.5	LRV No.	NCS No.	Welding Rod No.	2 & 2 CR	LRV No.	NCS No.	Welding Rod No.	2 & 2 CR	LRV No.	NCS No.	Welding Rod No.
26500 001	51.8 %	S 1510-Y	24806 057	26500 021	80.3 %	S 0502-Y	24806 017	26501 001	72.6 %	S 0502-Y	24806 017	26501 010	42.5 %	S 2500-N	24806 076
26500 002	41.5 %	S 1510-Y10R	24806 058	26500 026	47.6 %	S2010-R10B	24806 102	26501 002	56.6 %	S 1000-N	24806 085	26501 011	52.7 %	S 1005-Y20R	24806 077
26500 003	75.2 %	S 0505-R90B	24806 059	26500 027	56.6 %	S1515-Y30R	24806 103	26501 003	63.9 %	S 0804-G90Y	24806 086	26501 012	35.6 %	S 3010-Y20R	24806 078
26500 004	49.9 %	S 2002-Y	24806 060	26500 028	60.7 %	S1020-G80Y	24806 104	26501 004	53.9 %	S 1015-Y30R	24806 087	26501 013	16.3 %	S 4040-R90B	24806 079
26500 005	75.2 %	S 0603-Y20R	24806 061	26500 029	52.6 %	S2005-G	24806 105	26501 005	47.1 %	S 1515-G60Y	24806 088	26501 014	49.3 %	S 0580-Y10R	24806 080
26500 006	41.7 %	S 2005-Y20R	24806 062	26500 030	25.7 %	S3030-R20B	24806 106	26501 006	40.1 %	S 1515-B	24806 089	26501 015	31.2 %	S 0570-Y50R	24806 081
26500 009	38.3 %	S 1050-G50Y	24806 065	26500 031	65.6 %	S1015-B50G	24806 107	26501 007	46.1 %	S 1515-Y20R	24806 073	26501 016	48.9 %	S 1060-G80Y	24806 082
26500 010	31.9 %	S 3020-R90B	24806 066	26500 032	67.8 %	S1002-Y	24806 108	26501 008	37.7 %	S 3020-Y10R	24806 074	26501 017	16.1 %	S 2060-R	24806 083
26500 011	65.1 %	S 0510-Y	24806 067	26500 033	60.4 %	S1030-Y	24806 109	26501 009	57.6 %	S 1500-N	24806 075	26501 018	20.1 %	S 5020-R50B	24806 084
26500 013	69.2 %	S 0603-G80Y	24806 068	26500 034	74.8 %	S0515-G60Y	24806 110								
26500 015	46.2 %	S 1060-Y10R	24806 069	26500 035	20.4 %	S0510-B30G	24806 111								

HETEROGENEOUS
VINYL
WALLCOVERING

PROTECTWALL

■ WESTERN EUROPE:

Austria:

Tarkett Holding GmbH, Niederlassung Wien
Tel. +43 1 47 88 062

Belgium:

Tarkett France Belux – Tel. +32 16 35 98 80

Denmark:

Tarkett A/S – Tel. +45 43 90 60 11

Finland:

Tarkett Oy – Tel. +358 9 4257 9000

France:

Tarkett SAS – Tel. +33 1 41 20 42 49

Germany:

Tarkett Holding GmbH, Bereich Objekt
Tel. +49 62 33 810

Greece:

Tarkett Monoprosopi Ltd
Tel. +30 210 6745 340

Italy:

Tarkett S.p.A. – Tel. +39 0744 7551

Luxembourg:

Tarkett GDL SA – Tel. +352 949 211 8804

Netherlands:

Tarkett Holding GmbH, Vestiging Nederland
Tel. +31 76 57 80 760

Norway:

Tarkett AS – Tel. +47 32 20 92 00

Portugal:

Tarkett SA – Tel. +351 21 427 64 20

Spain:

Tarkett Floors S.L. – Tel. +34 91 358 00 35

Sweden:

Tarkett Sverige AB – Tel. +46 771 25 19 00

Switzerland:

Tarkett Holding GmbH, Bereich Objekt Schweiz
Tel. +41 043 233 79 24

Turkey:

Tarkett Aspen – Tel. +90 212 213 65 80

United Kingdom:

Tarkett Ltd – Tel. +44 (0) 1622 854 040

■ EASTERN EUROPE:

Baltic Countries:

Tarkett Baltics: Tel. +370 37 262 220

Czech Republic:

Tarkett France SAS, org. slozka
Tel. +420-271 001 602

Hungary:

Tarkett France SAS – Tel. +36 1 437 8150

Poland:

Tarkett Polska Sp. z o. o.
Tel. +48 22 16 09 231

Russian Federation:

ZA0 Tarkett RUS – Tel. +7 495 775 3737

Slovakia:

Tarkett France SAS, org.zlozka
Tel. +421 248 291 317

South East Europe:

Tarkett SEE
Tel. +381 21 7557 649 (44) 569 12 21

Ukraine:

Tarkett UA – Tel. +38 (0) 44 569 12 21

■ ASIA AND OCEANIA:

Australia:

Tarkett Australia Pty Ltd – Tel. +61 2 88 53 12 00

China:

Tarkett Floor Covering (Shanghai) Co. Ltd.
Tel. +86 (21) 60 95 68 38 ext 841

North East Asia:

Tarkett Hong Kong Limited
Tel. +852 2511 8716

India:

Tarkett France (India Branch)
Tel. +91 11 4352 4073

South East Asia:

Tarkett Flooring Singapore Pte. Ltd.
Tel. +65 6346 1585

■ AFRICA:

Tarkett International:

Tel. +33 1 41 20 41 01

■ MIDDLE EAST:

Tarkett Middle East:

Tel. +961 1 51 3363/4

Israël:

Tarkett International: Tel. +33 1 41 20 41 01

■ NORTH AMERICA:

USA:

Tarkett Inc. – Tel. +1 713 869 5811 /
Johnsonite – Tel. +1 440 543 8916

Canada:

Tarkett Inc. – Tel. +1 450 293 173

■ LATIN AMERICA:

Brazil:

Tarkett – Tel. 55 12 3954 7108

Argentina - Chile - Uruguay:

Tarkett Latam Mercosur
Tel. 54 11 47 08 07 72 / 54 9 11 44 46 88 82

Colombia - Panama - Bolivia - Ecuador -

Paraguay - Peru - Trinidad and Tobago:
Tarkett – Tel. 55 11 9 8410 9310

Mexico /Central America:

Tarkett Latam Mexico
Tel. 52 735 392-3948